

## FAST UTILITY CRAFT/ CREWBOAT



### PRINCIPAL PARTICULARS

YEAR BUILT	2007
PLACE BUILT	Dubai, UAE
DESIGN	Grandweld
FLAG	Panama
LENGTH OVERALL	41.00 m
LENGTH BP	37.33 m
BREADTH MOULDED	7.30 m
DEPTH MOULDED	3.50 m
DRAFT (MAX)	1.75 m
FREEBOARD (SLL)	1756 mm
CLASS	DNV
NOTATION	1A, Offshore Service Vessel R4
GRT/ NRT	242.00 T / 72.00 T
DEADWEIGHT	131.73 T

### DECK PARTICULARS

CLEAR DECK AREA	100.00 m <sup>2</sup>
DECK CARRYING LOAD	45.00 T
DECK STRENGTH	2.00 T/m <sup>2</sup>

### PERFORMANCE

MAXIMUM SPEED	21.4 Knots @ 20T DWT
ECONOMIC SPEED	16.5 Knots @ 20T DWT

### TANK CAPACITIES

FUEL OIL	60.00 m <sup>3</sup>
FRESH WATER	40.00 m <sup>3</sup>
BILGE	0.73 m <sup>3</sup>
BALLAST WATER	3.76 m <sup>3</sup>
DRILL WATER	Nil

### PROPULSION SYSTEM

MAIN ENGINES	3 x Cummins, KTA-38M2, 1350 HP @ 1950 RPM
AUXILIARY ENGINES	2 x Cummins, 6BT5.9 DM, 92 kW @ 1800 RPM 115/220V/3Ph/60Hz
PORTABLE GENERATOR	Nil
EMERGENCY GENERATOR	Nil
BOW THRUSTER	2 x Bow Thrusters 90HP Thrustmaster Cummins 6 CT8.3-D(M) 188 HP @ 1800 RPM
PROPELLERS	3 x Fixed Pitch Propellers
STEERING GEAR SYSTEM	2 x Duplex Electro Hydraulic Pump System
RUDDER	2 Units

### CARGO DISCHARGE CAPACITIES

FUEL OIL PUMP	Nil
FRESH WATER PUMP	Nil
BILGE	30 m <sup>3</sup> /hr

### DECK EQUIPMENT

ANCHOR WINDLASS C/W BOW	1 unit
-------------------------	--------

### ACCOMMODATION

PASSENGER SEATS	56 Seats
CREW	2p x 1, 1P x 2, 4P x 1, 3P x 2 = 14

### EXTERNAL FIRE-FIGHTING EQUIPMENT

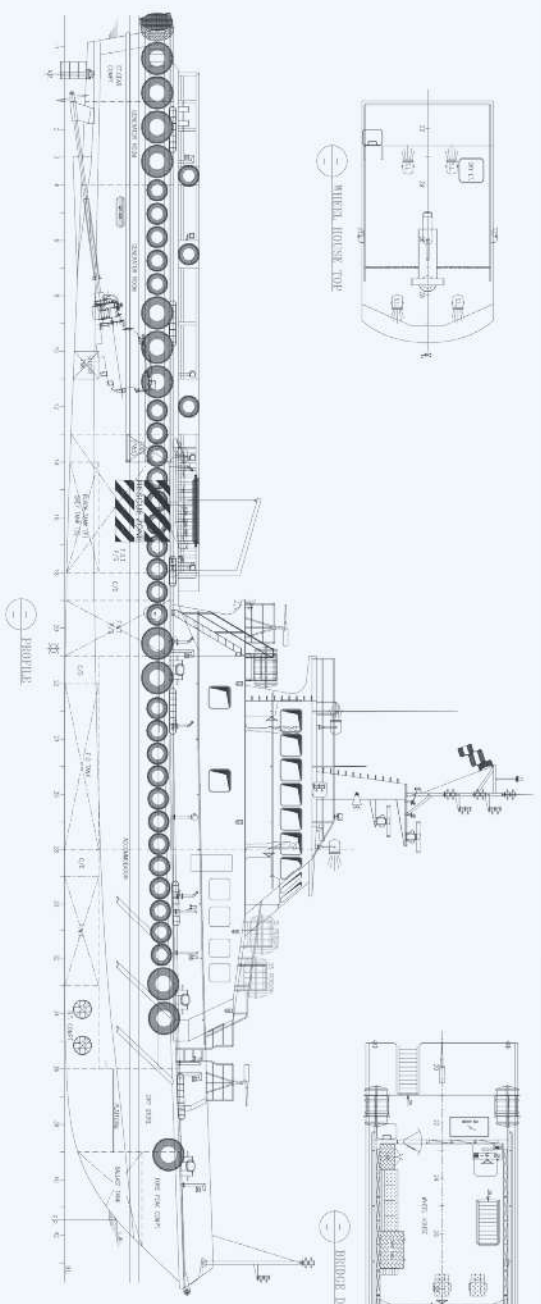
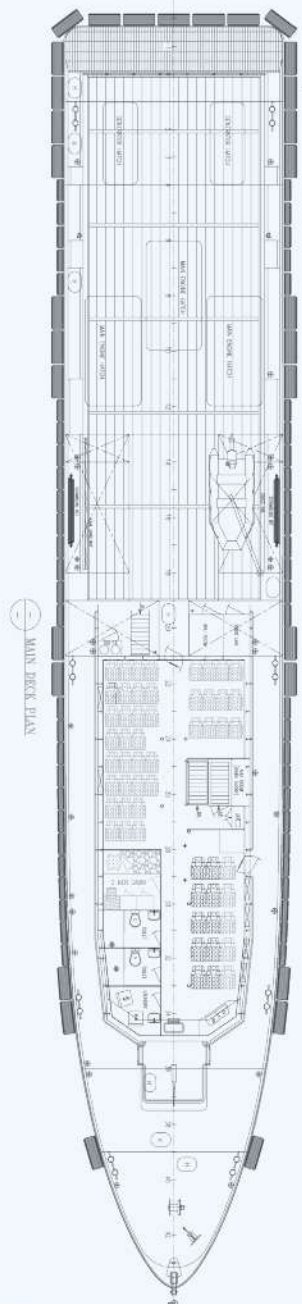
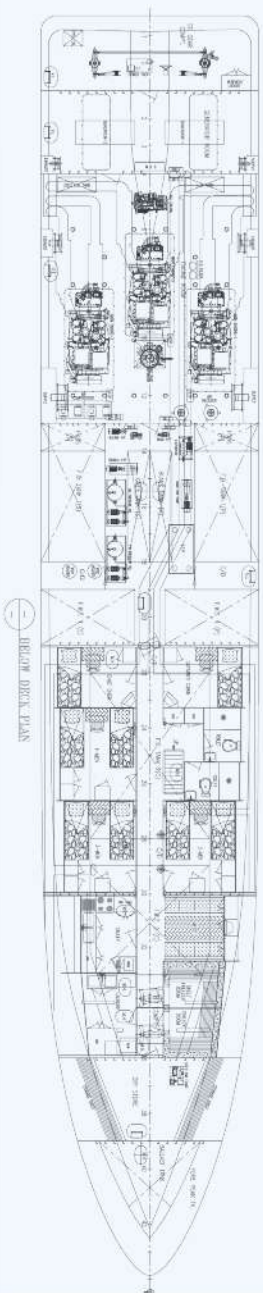
FI-FI NOTATION	Nil
FI-FI MONITORS	Nil
FI-FI PUMP	Nil
OIL DISPERSANT SYSTEM	Nil

### INTERNAL FIFI & ANTI-POLLUTION EQUIPMENT

EMERGENCY FIRE PUMP	CA 50/7A. Q = 25 m <sup>3</sup> / H.25
CO2 FI-FI SYSTEM	Fixed CO2 System for Engine room
FIRE DETECTION & ALARM	Optical, Multi-Sensor Smoke & Heat Detector

### LIFE-SAVING EQUIPMENT

LIFE RAFTS	6 x 25 Men, SOLAS Compliant
RESCUE BOAT	1 x FRC Viking 470-GPR-1.6 Person



PRINCIPAL PARTICULARS

LENGTH (O.A.)	41.00	m
BREADTH	7.30	m
DEPTH	3.50	m
DRAUGHT	1.75	m
CREW	14	
PASSENGERS	50	

