

ANCHOR HANDLING / TUG/ SUPPLY – DP 1

Year Built : 2008
 Class : Bureau Veritas
 Notation : ✕HULL✕MACH Supply Vessel/ Fire Fighting Ship 1
 Unrestricted Navigation✕Class 1 DYNAPOS System
 Type : Anchor Handling Tug Supply Vessel



DIMENSION

Length Overall : 59.25 m
 Length Waterline : 56.00 m
 LBP : 52.20 m
 Breadth Moulded : 14.95 m
 Depth Moulded : 6.10 m
 Draft Moulded : 4.95 m
 GRT : 1678 MT
 NRT : 503 MT
 Deadweight : 1400 MT

PERFORMANCE

Maximum speed : 13 knots
 Economical speed : 10.5 knots
 Type of fuel : Marine Gas Oil

CARGO CAPACITIES

Deck Cargo : 500 MT
 Deck Strength : 7.5 MT / m² uniform loading
 Clear Deck Area : 350 m²
 Fuel Oil : 530 m³
 Fresh Water : 370 m³
 Ballast/Drill Water : 390 m³
 Freezer : 10 m³ (-18^o C temperature)
 Chiller : 10 m³ (+14^o C temperature)
 Foam : 13 m³
 Detergent : 13 m³
 Mud : 419 m³
 Cement Tank : 4 x 1650 ft³ @ 80 psi

DP1 DYNAMIC POSITIONING SYSTEM

IMO Class 1 : Marine Technologies DP1
 Reference System : DGPS
 Wind Sensor
 Gyrocompass
 Motion Reference Unit

PROPULSION SYSTEM

Main Engine : 2 x 2575 BHP Caterpillar 3516B
 Main Generator : 3 x 315 kW Caterpillar 3408C
 Emergency Genset : 1 x 52 kW
 Bow Thruster : 1 x 6 MT Kawasaki
 Steering Gear : Electro-hydraulic type
 Propulsion : 2 x CPP
 Rudders : 2 x Conventional Rudder

DECK EQUIPMENT

Windlass : 1 x Electro-hyd for Ø 36 mm rated 8 MT @ 12 m/ min
 Anchor : 2 x 1300 kg High Hold Type Bow Anchor
 Anchor Chain : 742.5 m x 36 mm Ø port & stbd
 Capstan : 2 x 5 MT @ 15 m/ min
 Tugger Winch : 2 x 10 MT @ 15 m/ min

FIRE FIGHTING EQUIPMENT

External
 FiFi : Fire Fighting Class 1
 Fire pump : 2 x 1400 m³/h
 Fire monitor : 2 x 1200 m³/h @ 12 bar inlet pressure

Internal

Fixed System in E/R: CO2 system in engine room
 Fire Detection : All living space and Engine Room
 System

OTHERS

Rescue Zone : Port & Stbd Main deck
 Oily Water Separator : 1 x 1 m³/ hr

TOWING & ANCHOR HANDLING EQUIPMENT

Bollard Pull : 64.3 MT
 Tow/ AH Winch : Double Drum Waterfall Type,
 Upper Drum – Ø 56mm x 1000m (Towing)
 Lower Drum – Ø 56mm x 1000m (Anchor Handling)
 Remote control from aft control stand in wheelhouse
 Tow/ AH Pull : 150 MT @ 6 m/ min – Low Speed
 (1st Layer) : 71 MT @ 12 m/ min – Mid Speed
 : 23 MT @ 36 m/ min – High Speed
 Braking Capacity : 200 MT
 Stern Roller : Ø 1.6 m x 4.0 m length, SWL 200 MT
 Shark Jaws : 1 x Karm Fork 200 MT SWL
 Tow Pins : 2 x Electro-hyd Karmoy, SWL 200 MT

DISCHARGE RATES

Fuel Oil : 1 x 150 m³/ hr @ 75 m head
 Fresh Water : 1 x 100 m³/ hr @ 75 m head
 Mud Pump : 2 x 75 m³/ hr @ 75 m head
 Drill Water Pump : 1 x 100 m³/ hr @ 75 m head
 Bulk Cement : 75 m³/ hr @ 75 m head

NAVIGATIONAL /COMMUNICATION

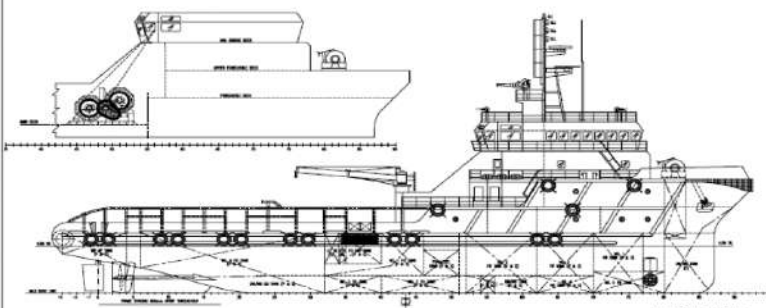
GMDSS : Furuno RC-1850-IT for Area A1 + A2 + A3
 SSB : 1 x Furuno CR 1500-IT
 SART : 2 x McMurdo
 Inmarsat C : 1 x Furuno
 Satellite EPIRB : 1 x Furuno
 Portable VHF Radio : 3 x Furuno
 Navtex Receiver : 1 x Furuno
 X-Band Radar : 2 x Furuno
 Echo Sounder : 1 x Furuno
 GPS Plotter : 1 x Furuno
 Gyrocompass : 1 x Anschuetz
 Autopilot : 1 x Anschuetz
 Weather Fax : 1 x Furuno
 Speed Log : 1 x Furuno
 Magnetic Compass : 1 x Saura
 AIS : 1 x Furuno
 E-mail : 9MHS2@globeemail.com

ACCOMMODATIONS

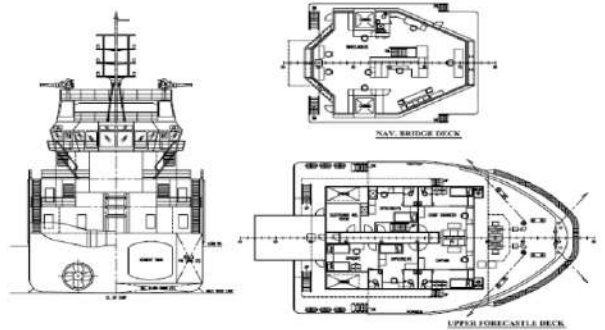
Berths : 4 x 1 berth cabin = 4
 : 3 x 2 berth cabins = 6
 : 8 x 4 berth cabins = 32
 Total : 42
 Hospital : 1 x 1 berth cabin
 All cabins are fully air-conditioned

LIFE SAVING APPLIANCE

Search Lights : 3 x 2000 W
 Floodlights : 4 x 1000 W
 Liferrafts : 6 x 25 men Solas Type
 Lifebuoys : 6 pcs with buoy lights
 Life jackets : 53 pcs
 Rescue boat : 1 x 6 men rigid
 Air Breathing App. : 6 Sets
 Parachute Distress : 12 Units, SOLAS Type

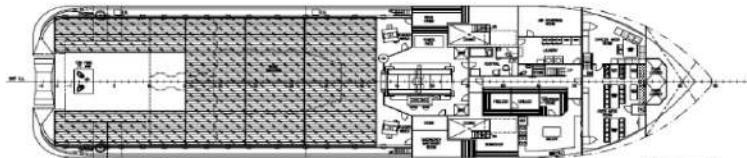


OUTBOARD PROFILE

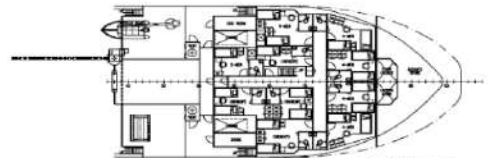


NAV. BRIDGE DECK

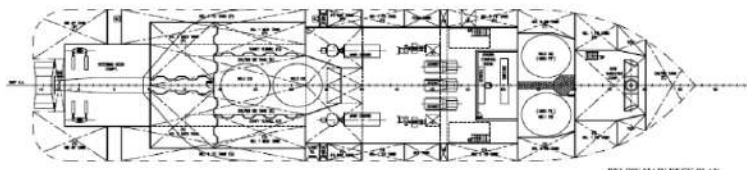
UPPER FORECASTLE DECK



MAIN DECK PLAN



FORECASTLE DECK



BELOW MAIN DECK PLAN

PRINCIPAL DIMENSIONS

LENGTH OVERALL	39.25 M
LENGTH WATERLINE	35.00 M
LENGTH BETWEEN PERPENDICULARS	23.25 M
BEAM MOULDED	14.85 M
DEPTH MOULDED	5.15 M
DESIGN DRAWT	4.95 M
FUEL OIL	540 M ³
FRESH WATER	750 M ³
DRAWL WATER / W.B.	800 M ³
W.B.	770 M ³
CLAR DECK AREA	340 M ²
SECH. CARGO DECK LOADING = 2.57 (M ²)	508 TONNE
DRY BULK TANKS (4 X 1800 T ³)	187 M ³
MAIN PROPELLION ENGINE	2 X 2570 BHP
SPEED (CRUISE)	13.2 KNOTS
BOARD PLAN	52 TONNE
COMPLEMENT	OFFSHORE SUPPORT 42 MEN
CLASS & NOTATION	ABS ◆ A1 (C) VESSEL, FIRE FIGHTING
VESSEL CLASS	1 + AMS